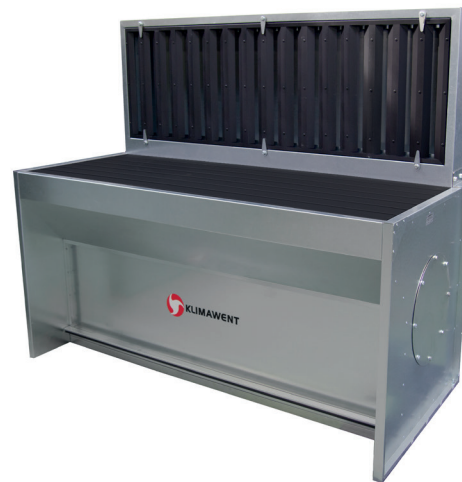


# SLOT

GRINDING-WELDING STATION



## APPLICATION

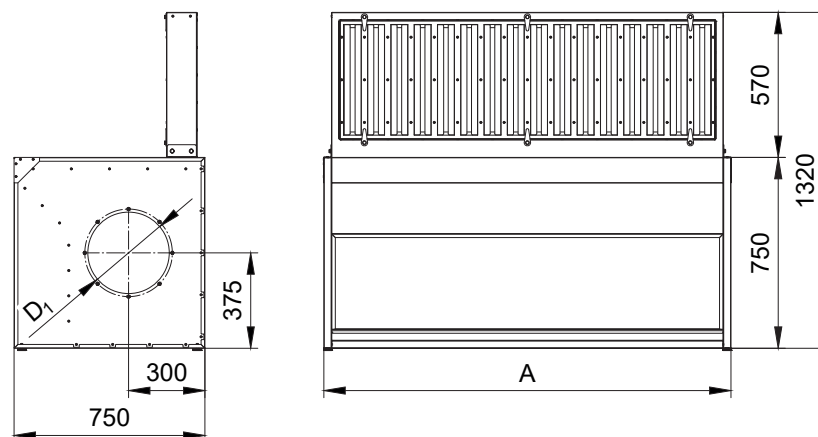
- welding, wood processing, grinding or metals deburring
- manual cutting with plasma burner (after the grate is replaced)
- cooperation with an extraction fan or a filtering unit

## FEATURES

- chamber with a grate and a drawer for dust
- on the rear edge is located a vertical suction chamber
- the connection is on both sides of the device
- option: grate for manual cutting with plasma burner

## ADVANTAGES

- efficient air extraction
- various sizes of the worktables
- possibility of replacement of the standard grate for a grate for manual cutting with plasma burner



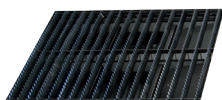
## TECHNICAL DATA

Type of the device	Part No.	A [mm]	D <sub>1</sub> [mm]	Recommended volume flow [m <sup>3</sup> /h]	Load carrying capacity* [kg]	Weight [kg]
SLOT 1600	813S13	800	200	1600	500	57
SLOT 2000	813S14	1200	250	2000	500	75
SLOT 3000	813S15	1600	315	3000	500	94
SLOT 4000	813S16	2000	315	4000	500	113

\*Load capacity is specified for the whole grate surface.

## ADDITIONAL EQUIPMENT

### REPLACEABLE GRATE

	Type	Part No.	Uwagi  Provides possibility of efficient extraction of the contamination arising during the manual cutting with plasma burner. The grate is installed in a place of the standard grate.
	R-1600	801R04	
	R-2000	801R05	
	R-3000	801R06	
	R-4000	801R07	