

KOS-L-ALAN-N

RAIL EXTRACTION SYSTEM WITH A REEL EXTRACTOR



APPLICATION

- exhaust extraction – by means of a spring-driven mobile extractor, displacing along the suction duct

FEATURES

- the system consists of a standard self-tightening suction duct and a mobile reel extractor

ADVANTAGES

- the system provides possibility of adjustment the extractor position towards the exhaust pipe of the served vehicle
- one extractor set can be used for several extraction posts
- easy hose blockage, to adjust the nozzle position towards the exhaust pipe of the vehicle

SELF-TIGHTENING SUCTION DUCT

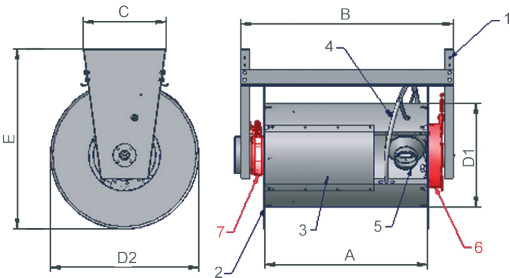
	eTyp	Part No.	Segment length [m]	Cross-section dimensions [mm]	Cross-sectional area [cm²]	Unit weight [kg/m]	Segment weight [kg]
	KOS-L	804K45	1,25	160x240	384	14,2	17,75
		804K46	2,5	160x240	384	14,2	35,5

Accessories of the KOS-L self-tightening suction duct – see catalogue card KOS-L, OBP/P.
Maximum temperature of the conveyed medium 200°C.

MOBILE REEL EXTRACTOR

	Type¹	Equipped with a cut-off damper	Part No.	Maximum torque [Nm]	Hose	Weight² [kg]
	OP-ALAN-U/C-8-N	no	805O76	50	Each reel is adapted for fastening the hose of diameter: Ø100, Ø125 or Ø150 mm and of lengths 8 or 12 m. Selection of the hose set – see catalogue card ALAN-N.	61,7
	OP-ALAN/P-U/C-8-N	yes	805O78	50		61,7
	OP-ALAN-U/C-12-N	no	805O77	50		63,7
	OP-ALAN/P-U/C-12-N	yes	805O79	50		63,7

1. Prior to selection of the suitable extractor type – contact KLIMAWENT S.A.
2. The values do not include the weight of the hose set.



Spring drive		
Dimension	U/C-8-N	U/C-12-N
A	775	1000
B	1000	1225
C	355	355
D1	450	450
D2	645	645
E	780	780
1. Frame 2. Reel 3. Reel cover 4. Spiral 5. Connection fitting piece 6. Spring mechanism 7. Band brake		

FANS

Fans should be selected with reference to separate catalogue cards, depending on the volume flow and flow resistances.

NOZZLES

Nozzles and suction stands, cooperating with the extractors – see separate catalogue card as they are additional equipment.