

# ERGO-MINI

EXTRACTION ARMS

## APPLICATION

- extraction of gas and dust at workplaces
- designation: chemical industry, pharmaceuticals, electronic industry, jewellery and goldsmith

## FEATURES

- acidproof materials of which the arm is manufactured (PVC, polyamide, stainless steel)
- individual cooperation with an extraction fan, or in a system of several extraction arms

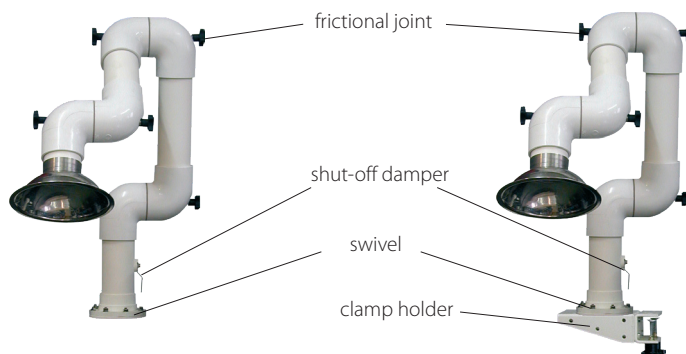
## ADVANTAGES

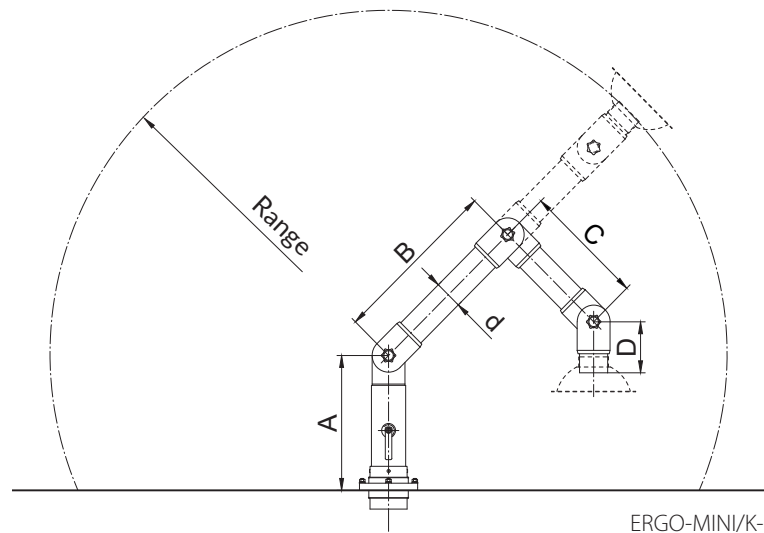
- easy installing – directly to the tabletop of the workplace, or by means of a clamp
- large workrange – due to a swivel and self-adjusting frictional joints
- wide range of applications i. e. plenty of industry fields
- higher operational comfort and safety of the personnel



ARMS INSTALLED DIRECTLY

CLAMP INSTALLED ARMS



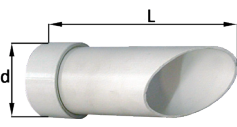




ERGO-MINI/K-50/3, ERGO-MINI/K-75/3

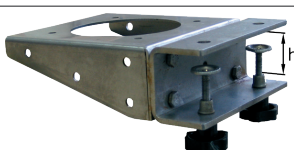
**TECHNICAL DATA**

Type	Part No.	Workrange [mm]	d [mm]	A [mm]	B [mm]	C [mm]	D [mm]	Weight [kg]	Resistances upon volume flow 120 m <sup>3</sup> /h [Pa]
ERGO-MINI/K-50/3-950	810R53	720	60	280	360	260	100	2,5	490
ERGO-MINI/K-75/3-1150	810R59	950	80	265	460	360	130	3,0	220

**REPLACEABLE HOODS**

Sort of the hood	Type	Part No.	Dimensions [mm]			Weight [kg]
			d	D	L	
	SS-50/K	810S70	70	—	180	0,12
	SS-75/K	810S71	85	—	200	0,19
	SM-50/K	810S72	64	158	70	0,12
	SM-75/K	810S73	76	200	80	0,18
	SD-50/K	810S74	64	182	80	0,15
	SD-75/K	810S75	76	222	90	0,20

**CLAMPS (one size for types 50 and 75 mm)**

	Type	Part No.	h [mm]	Weight [kg]
	VK/K	810U06	30	0,45