

BEL/SSAK



APPLICATION

- extraction of exhaust fumes emitted by vehicles of constant garaging place, e.g. fire department, where instant readiness for action departure from the depot is required
- applied for vehicles with lower exhaust pipe located at the side the carbody

FEATURES

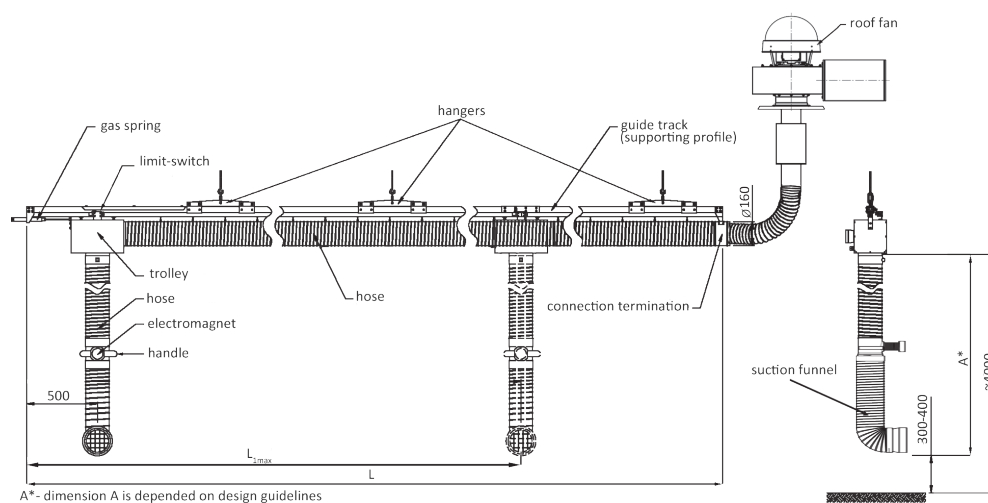
- lightweight aluminium guide profile
- hose – suspended under the guide profile
- extractor trolley

- vertical suction hose
- L-shape nozzle
- electromagnet set

ADVANTAGES

- at the moment of the sudden alarm departure of the fire brigade vehicle, driver does not need to remember of manual nozzle disconnection (from the exhaust pipe)
- easy installing
- radio control
- it is possible to connect several extractors to one fan

EXHAUST EXTRATION SYSTEM BEL/SSAK WORKING WITH A ROOF FAN



TECHNICAL DATA

Type	BEL/SSAK-6	BEL/SSAK-9	BEL/SSAK-12	BEL/SSAK-15
Part No	804O80	804O81	804O82	804O83
Recommended volume flow in the nozzle [m ³ /h]	1200–1500	1200–1500	1200–1500	1200–1500
Flow resistances [Pa]	1400–1800	1800–2100	2300–2600	2500–2900
Length of the guide profile L [m]	6	9	12	15
Active range of the nozzle movement L _{max} [m]	4,2	6,5	8,7	11
Weight [kg]	40	60	70	82
Thermal resistance of the hose [°C]	200	200	200	200