

# Use and Maintenance Manual



## Flame cutting table      **SCT-2100**

### Contents:

1.	Introductory Remarks .....	2
2.	Application.....	2
3.	Reservations of Producer .....	2
4.	Technical Data .....	2
5.	Structure and Function .....	3
6.	Assembly and Start-up .....	3
7.	Operational Use.....	3
8.	Troubleshooting Guide .....	4
9.	Maintenance .....	4
10.	Occupational Health and Safety.....	4
11.	Transport and Storage.....	4
12.	Terms of warranty .....	4
13.	Sample of the Declaration of Conformity .....	6

813S10 SCT-2100 10.01.2019/EN

## 1. Introductory Remarks

The purpose of the present Use and Maintenance Manual is to supply User with directions within the range of application, installation, start-up and the use of the **SCT-2100 flame cutting table**.

**Installing, start up and operational use are exclusively admissible after getting acquainted with the contents of the Use and Maintenance Manual.**

With regard to continuity of work carried on improvement of our products, we reserve for ourselves the revision possibility of the draft and technological changes improving their functional features and safety.

Construction of the **SCT-2100** flame cutting table meets the requirements of the current state of technology as well as the safety and health assurances included in:

– **2006/42/EC Machinery Directive** of the European Parliament and of the Council of May 17<sup>th</sup>, 2006 on machinery – amending the 95/16/EC (recast) /*Journal of Laws EC L157 of 09.06.2006, page 24*/

Additionally, the appliance meets following harmonized standard:

- **EN ISO-12100:2012** – “Safety of machinery – Basic concepts, general principles for design. Risk assessment and risk reduction”

## 2. Application

Flame cutting table **SCT-2100** (gas- and plasma cutting) is an efficient solution for extraction the dusts, fumes and gases arising during cutting the steel sheet. Those substances are noxious for the environment and harmful for health. Flame cutting table extracts the contamination at the site of emission. In application with a filtering unit of adequate efficiency the flame cutting table provides clean air at workplace, protects the environment and health of the working people.

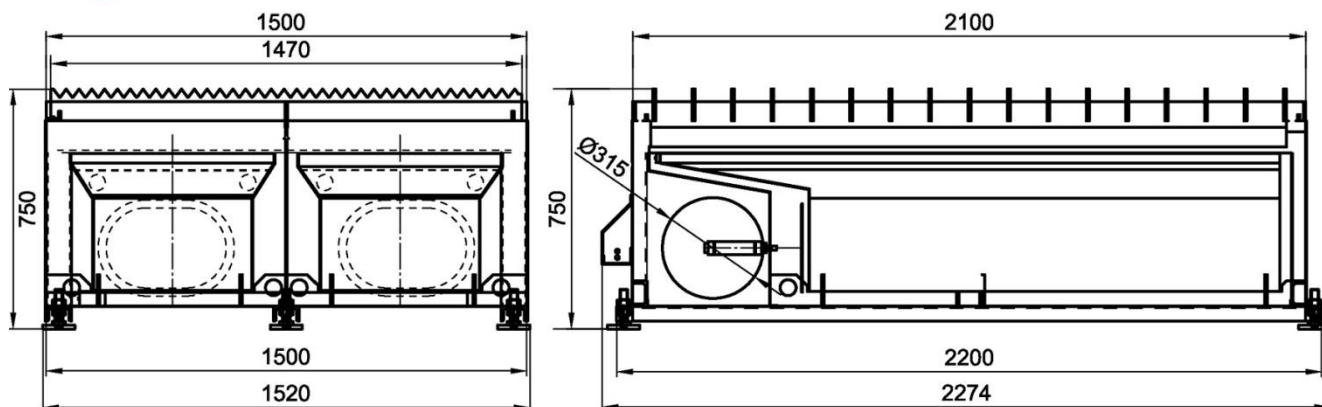
## 3. Reservations of Producer

- A. Manufacturer accepts no liability for any consequences following from the operational use that is in contradiction to the purpose of application.
- B. Installing of any additional elements not belonging to the normal device structure (or accessory set) is not acceptable.
- C. Do not undertake any structural changes or constructional modifications on the device on one's own.
- D. Maintenance and any repair can be performed exclusively by an authorized person.

## 4. Technical Data

Table No.1

Type	Surface of the grate of one module [m <sup>2</sup> ]	Surface of one segment grate [m <sup>2</sup> ]	Recommended amount of the extracted air	
SCT	1,5	3,15	for gaseous cutting [(m <sup>3</sup> /h)/m <sup>2</sup> ]	for plasma cutting [(m <sup>3</sup> /h)/m <sup>2</sup> ]
			3000	6000



**Fig. No.1 – SCT – flame cutting table**

## 5. Structure and Function

SCT consists of subsequent assemblies:

- table body
- replaceable grate
- waste container
- cut-off damper assembly
- elements of the pneumatic control for the cut-off damper

Tables are constructed of single modules, while single modules are divided into two sections. Depending on the size of the (meant for cutting) elements, the tables can be suited together in a way providing adequate length.

The material for cutting ought to be placed on the grate of the tables. The grate is constructed of specifically shaped steel sheets, therefore it will not get burnt through. During the cutting, the spatters and impurities of the processed material fall into the subsequent waste containers that are easy to empty.

The mounting eye grips, provided at the waste containers, are for lifting the elements and significantly simplify the cleaning process. Additionally, the waste containers are protected with an extra grill, so the small processed elements would not fall onto the waste container bottom.

As the shut-off dampers are opened pneumatically (by means of micro-switches), the extraction proceeds exclusively from one section, right where the cutting process takes place, resulting in significant pollution extraction efficiency and it is also energy saving.

## 6. Assembly and Start-up

Assembly and start-up are carried out by a maintenance team of manufacturer or a maintenance team monitored by manufacturer.

## 7. Operational Use

In the course of operational use, empty and clean the waste containers and clean the grate of the deposited metal particles (mechanical cleaning).

**CAUTION:** In application with a filtering unit (e.g. UFO-4), to provide extraction from one table, its real volume flow will be by twice reduced, as compared to its nominal volume flow. This has to be considered upon the selection of the device size. For example, for UFO-4-M/N-2 of nominal volume flow 10000 m<sup>3</sup>/h, its efficiency for plasma cutting or gas cutting will be 5000 m<sup>3</sup>/h.

## 8. Troubleshooting Guide

Table No.2

Problem	Possible reason	Remedial measure
obstruct extraction of dust	the inlet grill of the fan or hood (of the filtering unit) is clogged	clean or replace the grills or remove the obstruct objects that got stuck in the inlet
	the micro-switch is faulty	replace the faulty elements
	failure of the servo opener the shut-off damper	

## 9. Maintenance

The maintenance consists only in periodical cleaning the grill and grate.



During these operations it is important to disconnect the device from the pneumatic supply system.

## 10. Occupational Health and Safety

Start-up and maintenance are exclusively possible after getting acquainted with the contents of the present Use and Maintenance Manual. While the device is in operation, do not undertake neither assembly- dismantling activities nor repair.



Any repair and maintenance activities should be performed exclusively by an authorised person or by a servicing team of the manufacturer.

Having completed the repair, check if any elements, tools (that could damage the construction) have been left within the structure of the flame cutting table.

## 11. Transport and Storage

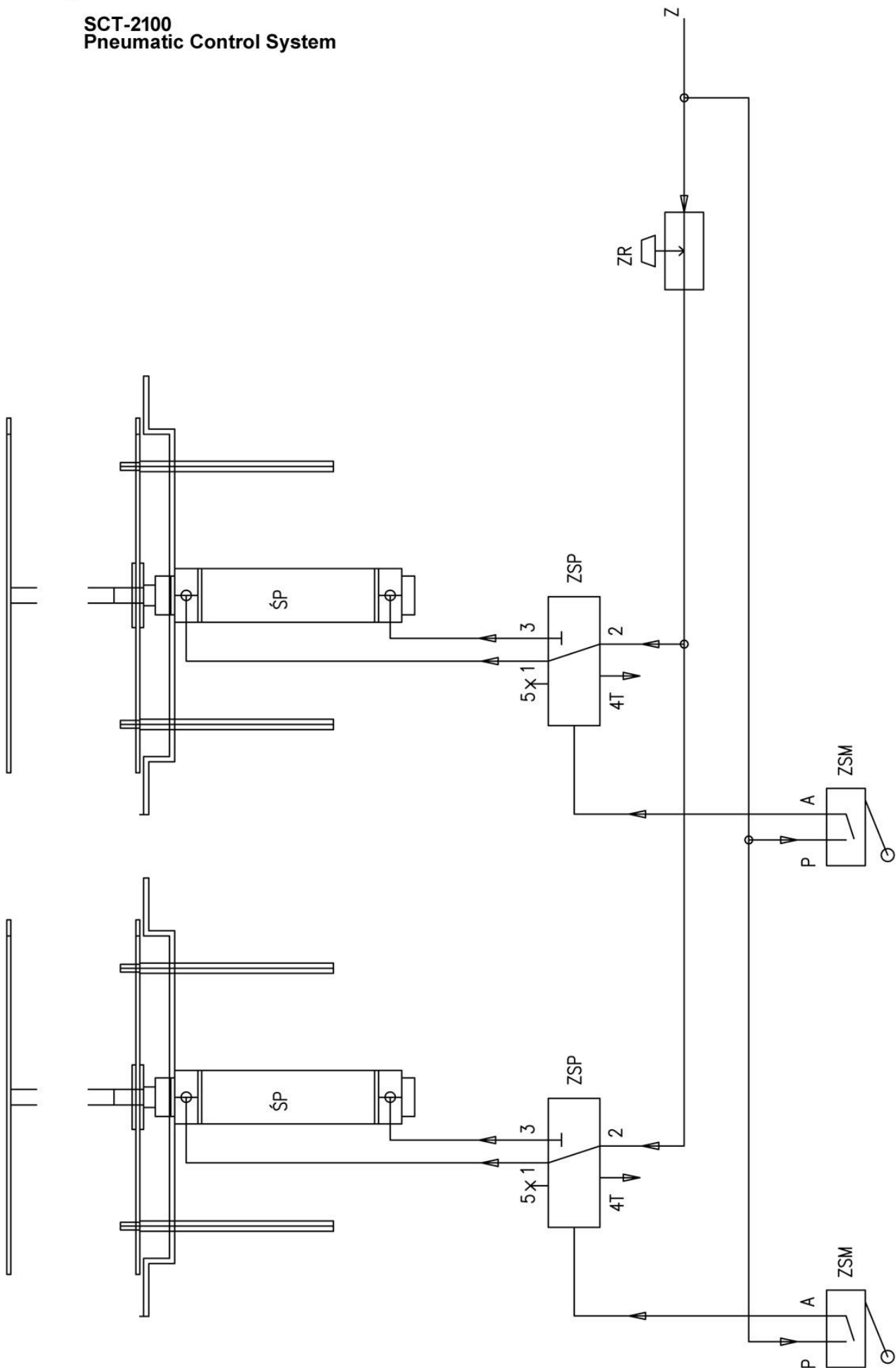
The device is transported in single modules. The modules are placed on palettes and protected from damage and uncontrolled slide (displacement).

## 12. Terms of warranty

The period of warranty for the purchased device is indicated in the "Card of Warranty". The warranty does not comprise:

- mechanical damages and malfunctions caused by User,
- device failures caused during the use which is in contradiction with the purpose of application and with the present Use and Maintenance Manual,
- malfunction resulting from the improper storage or incorrect maintenance.

Infringement of the Section 3 "Reservations of Producer" of the present Use and Maintenance Manual and especially modifications undertaken by User on one's own or use in contradiction with the purpose of application – shall result in the loss of warranty validity.

**SCT-2100**  
**Pneumatic Control System**

**Fig. No.2**

## 13. Sample of the Declaration of Conformity

Declaration of conformity EC No. ....

Manufacturer (eventually the authorized representative / importer):

name: **KLIMAWENT S.A.**

address: **81-571 Gdynia, Chwaszczyńska 194**

A person, authorized for issuing the technical documentation: Teodor Świrbutowicz, KLIMAWENT S.A. hereby declares that the appliance:

name: **flame cutting table**

type/model: **SCT-2100**

serial number: ..... year of production: .....

meets the requirements of the subsequent European Directives:

– **2006/42/EC Machinery Directive** of the European Parliament and of the Council of May 17<sup>th</sup>, 2006 on machinery – amending the 95/16/EC (recast) /*Journal of Laws EC L157 of 09.06.2006, page 24*/

The appliance meets following harmonized standard:

- **EN ISO-12100:2012** – “Safety of machinery – Basic concepts, general principles for design. Risk assessment and risk reduction”

.....  
place, date

**KLIMAWENT S.A.**  
**Supported Employment Enterprise**  
81-571 Gdynia, ul. Chwaszczyńska 194  
phone: +49 58 829 64 80  
email: [klimawent@klimawent.com.pl](mailto:klimawent@klimawent.com.pl)  
[www.klimawent.com.pl](http://www.klimawent.com.pl)

.....  
signature of authorised person  
District Court Gdańsk-Północ  
in Gdańsk, VII Wydział Gospodarczy  
of the National Register of Court  
KRS 0000308902 company stock  
13.779.200 zł paid in total

.....  
name, surname, function  
of the signatory  
NIP: 958 159 21 35  
REGON: 220631262  
Bank Account: **Santander Bank Polska S.A.**  
56 1500 1025 1210 2007 8845 0000

NOTES:

**NOTES:**