

Use and Maintenance Manual



Extraction system

ROL-GOL

Contents:

1.	Introductory Remarks	2
2.	Application.....	2
3.	Reservations of Producer	2
4.	Technical Data.....	2
5.	Structure and Function	2
6.	Assembly and Start-up	3
7.	Operational Use.....	5
8.	Troubleshooting Guide	5
9.	Maintenance	5
10.	Occupational Health and Safety.....	6
11.	Transport and Storage.....	6
12.	Terms of warranty	6
13.	Sample of the Declaration of Conformity	7

803Z01 ROL-GOL 10.01.2019/EN

1. Introductory Remarks

The purpose of the present Use and Maintenance Manual is to supply User with directions within the range of application, installation, start-up and the use of the **ROL-GOL extraction system**.

Installing, start up and operational use are exclusively admissible after getting acquainted with the contents of the Use and Maintenance Manual.

With regard to continuity of work carried on improvement of our products, we reserve for ourselves the revision possibility of the draft and technological changes improving their functional features and safety.

Construction of the **ROL-GOL** extraction system meets the requirements of the current state of technology as well as the safety and health assurances included in:

– **2006/42/EC Machinery Directive** of the European Parliament and of the Council of May 17th, 2006 on machinery – amending the 95/16/EC (recast) /*Journal of Laws EC L157 of 09.06.2006, page 24*/

Additionally, the appliance meets following harmonized standard:

- **EN ISO-12100:2012** – “Safety of machinery – Basic concepts, general principles for design. Risk assessment and risk reduction”

2. Application

ROL-GOL extraction system is efficient in extraction of exhaust gas emitted by locomotives or heavy vehicles (building constructional machines, military combat vehicles). The extraction system are constructed for vehicles with the exhaust pipe located at the highest point and are directed upright (stack cane). The extraction system works with a roof extraction fan.

3. Reservations of Producer

- A. Manufacturer accepts no liability for any consequences following from the operational use that is in contradiction to the purpose of application.
- B. Installing of any additional elements not belonging to the normal device structure (or accessory set) is not acceptable.
- C. Do not undertake any structural changes or constructional modifications on the device on one's own.
- D. Protect the flexible elements and the suction ducts from mechanical damage.
- E. Prior to installing, check the load carrying capability of the building structure where the system will be mounted. Unstable installing can result in uncontrolled device detachment and hazard to personnel / people in the vicinity.
- F. The system cannot be used for conveying the air containing aggressive impurities or substances causing explosion hazard.

4. Technical Data

Table No.1

Type	Recommended volume flow [m ³ /h]	Flow resistances [Pa]	Range [m]	Thermal resistance of the hose [°C]	Weight [kg]
ROL-GOL	9000 - 10000	~1000	maximum 6	200	290

5. Structure and Function

ROL-GOL extraction system consists of subsequent assemblies:

- RO-4-E-D extension arm
- RO-2-E-D extension arm
- extraction hood
- extraction units – spiral seam ducts
- high-temperature hoses D315.

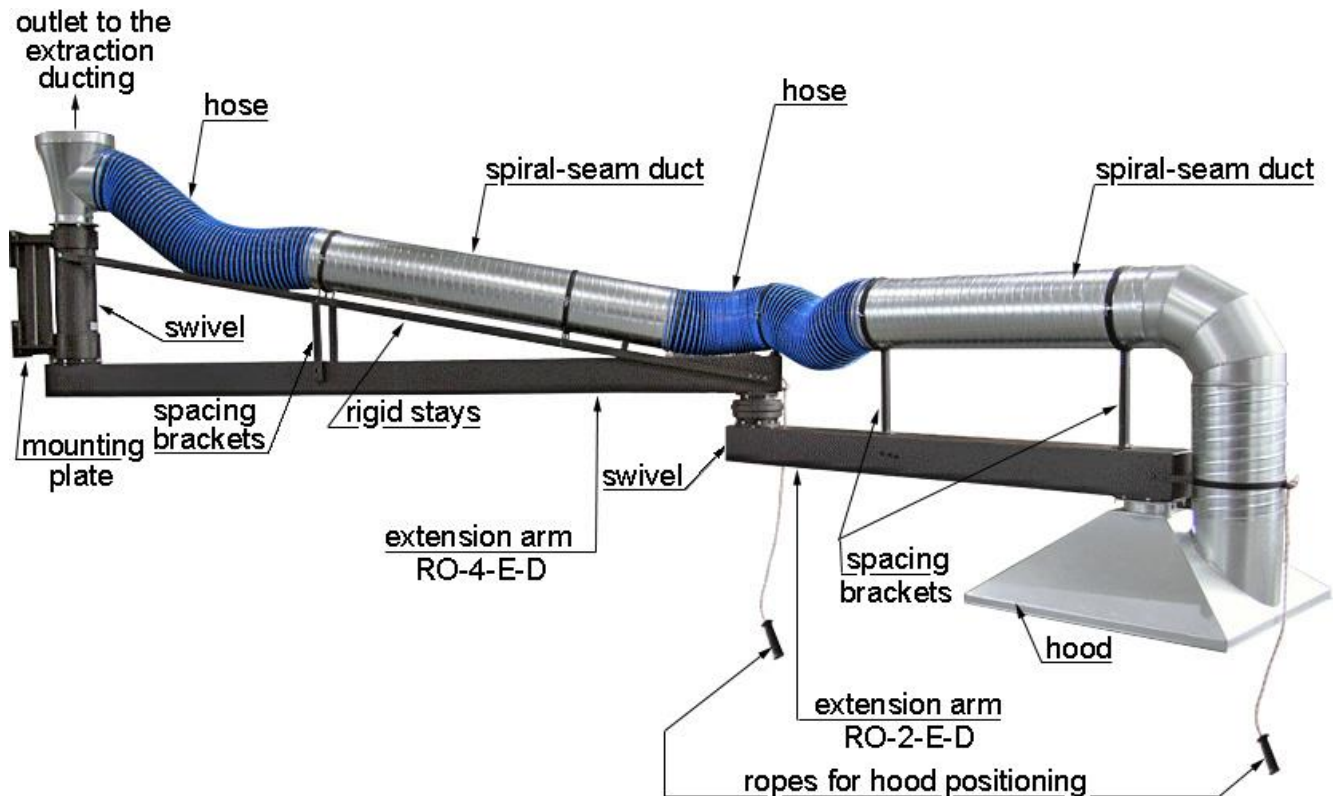


Fig. No.1 – ROL-GOL – Structure

The swivel ensures full rotation of the extraction system. By means of the positioning ropes, the hood can be adjusted exactly above the exhaust pipe of the locomotive or a vehicle. After the hood is positioned it is time to switch on the extraction fan.

6. Assembly and Start-up

Prior to installing:

- check the load carrying capacity of the constructional element of the building, in places where the extraction system shall be installed;
- prepare the required constructional elements connected with the building structure, in site of installing – in the aspect of suitability of screw connection of the supporting plate of the wall wall bracket.

Diameters, hole pattern and bolt holes quantity, as well as the diameters of the installing bolts of the mounting plate for the RO-4-E-D extension arm, are given in Fig. No.2. During the installing take into account that the mounting plate is positioned vertically (if not, the extension arm will set automatically always in the same position).

First install the mounting plate, then the RO-4-E-D extension arm, subsequently the RO-2-E-D extension arm (at the end of RO-4-E-D extension arm) – see Fig. No.1.

Next, the extraction ducts, along with the spacing brackets, should be fastened to the arms, and finally, install the hood and hoses (according to the Fig. No.1). The outlet of the system ought to be connected with the extraction ducting, by means of the spiral-seam ducts.

After the whole extraction system is assembled, it is time to adjust the hood right above the exhaust pipe of the served vehicle and start the extraction fan.

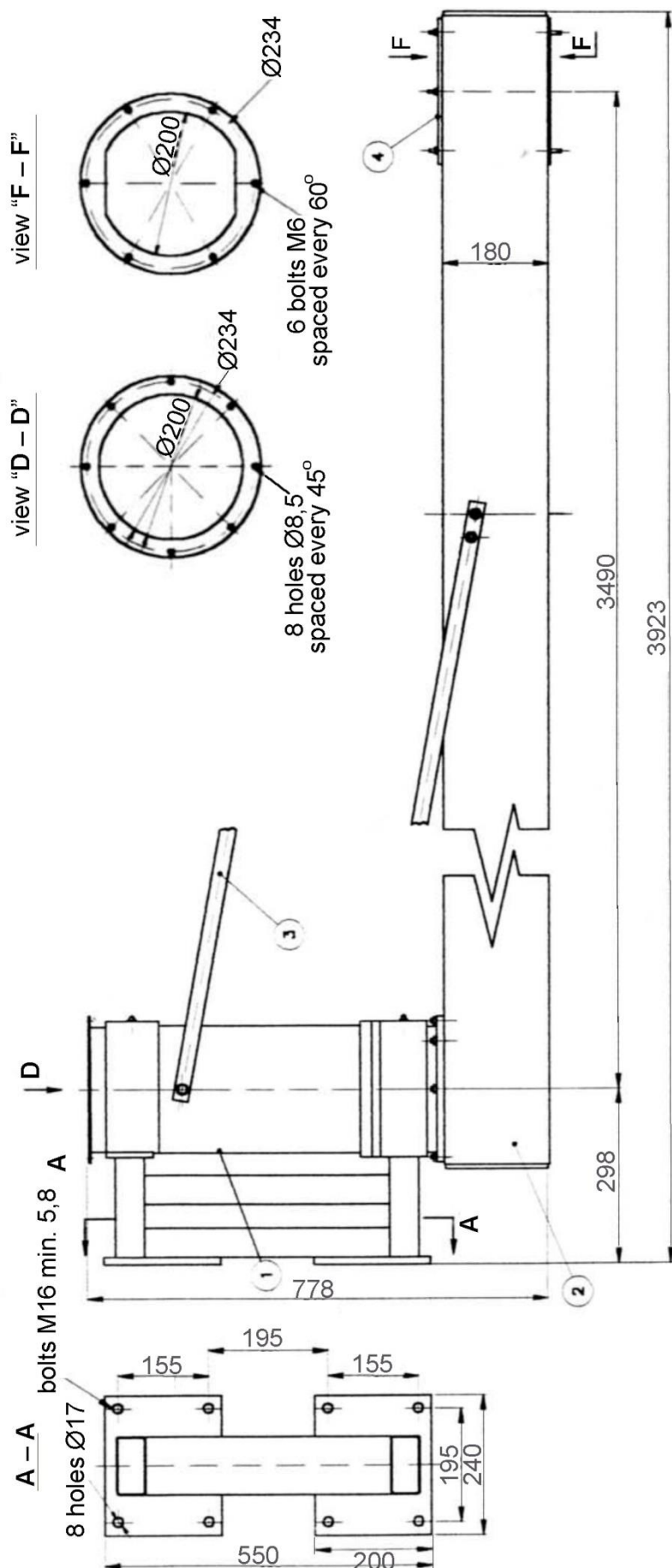


Fig. No.2 – RO-4-E-D – Dimensions, Structure

7. Operational Use

Before the operation, examine if the extraction system turns without rotation resistances and after its position is adjusted to User's needs – the system should not change automatically the required position. After the work is completed, the extraction system should be set into home position – as a safe configuration. Additionally, remember to switch off the extraction fan.

Example application of the ROL-GOL extraction system is illustrated in Photo No.1.



Photo No.1 – ROL-GOL – Example of application

8. Troubleshooting Guide

Table No.2

	Problem	Possible reason	Corrective action
1.	the extension arm sets automatically always in the same position	the swivel mounting is not levelled in vertical position	Adjust the swivel by levelling the mounting plate of the whole extraction system vertically.
2.	the extension arm is turning with too high or too low rotation resistance	improperly adjusted swivel	tighten or release the adjustment nuts
3.	reduced extraction volume efficiency, along with increased noise of the extraction system	incorrect impeller rotation sense of the extraction fan	change the phase sequence of the power supply for the three-phase motor

9. Maintenance

Maintenance consists in following steps:

- Evert three months – lubricate the swivel with solid grease (the lubrication nipple is located in the swivel flange).
- After one year of use, or after the part replacement or repair of an element (when its wear has been noticed) – undertake technical supervision.

-
- Clean the internal surface of the duct segments from the deposited impurities. Frequency of these activities depends on the intensity of use. **Every three months, it is recommended to examine the cleanness of the segments and remove the impurities when necessary.**
-

10. Occupational Health and Safety

ROL-GOL extraction system will not cause any hazard under the condition that they are firmly and correctly installed to the wall or other constructional element of the building. Unsure mounting could result in uncontrolled detachment of the system and cause hazard to people in the vicinity. After the completed work, leave the device in ultimately used position, in such a configuration that would not cause barrier to the operator / personnel.

Before the installing check the load carrying capacity of the building structure. During the operational use necessarily observe the regulations of Occupational Health and Safety.

11. Transport and Storage

The system is transported in assemblies:

- RO-E-4-D extension arm
- RO-E-2-D extension arm
- spiral-seam duct
- hoses
- hood.

The unit ought to be stored in dry rooms and in areas of efficient ventilation. During the transport / reloading protect the device from mechanical damage, scratching, indents, package damage and pay attention that the surface markings do not get detached / obliterated.

12. Terms of warranty

The period of warranty for the purchased device is indicated in the “Card of Warranty”. The warranty does not comprise:

-
- device failures caused during the use which is in contradiction with the purpose of application and with the present Use and Maintenance Manual,
 - mechanical damages and malfunctions caused by User,
 - changes / modifications introduced by User on one’s own,
 - malfunction resulting from normal operational wear.
-

Infringement of the Clause G Section 3 “Reservations of Producer” of the present Use and Maintenance Manual and especially modifications undertaken by User on one’s own or use in contradiction with the purpose of application – shall result in the loss of warranty validity.

13. Sample of the Declaration of Conformity

Declaration of conformity EC No.

Manufacturer (eventually the authorized representative / importer):

name: **KLIMAWENT S.A.**

address: **81-571 Gdynia, Chwaszczyńska 194**

A person, authorized for issuing the technical documentation: Teodor Świrbutowicz, KLIMAWENT S.A. hereby declares that the appliance:

name: **extraction system**

type/model: **ROL-GOL**

serial number: year of production:

meets the requirements of the subsequent European Directives:

– **2006/42/EC Machinery Directive** of the European Parliament and of the Council of May 17th, 2006 on machinery – amending the 95/16/EC (recast) /*Journal of Laws EC L157 of 09.06.2006, page 24*

The appliance meets following harmonized standard:

- **EN ISO-12100:2012** – “Safety of machinery – Basic concepts, general principles for design. Risk assessment and risk reduction”

.....
place, date

KLIMAWENT S.A.
Supported Employment Enterprise
81-571 Gdynia, ul. Chwaszczyńska 194
phone: +49 58 829 64 80
email: klimawent@klimawent.com.pl
www.klimawent.com.pl

.....
signature of authorised person
District Court Gdańsk-Północ
in Gdańsk, VII Wydział Gospodarczy
of the National Register of Court
KRS 0000308902 company stock
13.779.200 zł paid in total

.....
name, surname, function
of the signatory
NIP: 958 159 21 35
REGON: 220631262
Bank Account: **Santander Bank Polska S.A.**
56 1500 1025 1210 2007 8845 0000

NOTES: