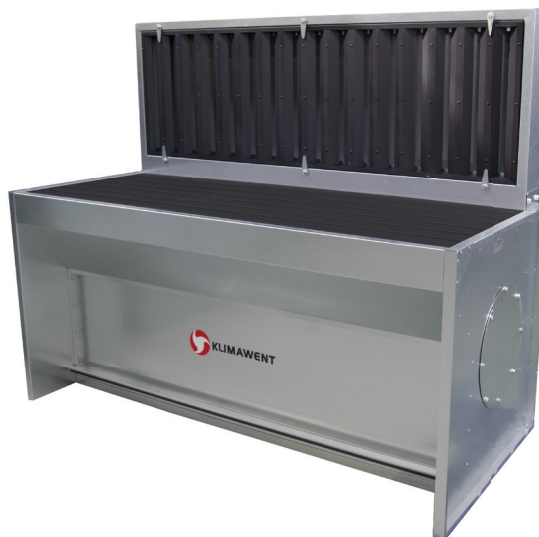


## SLOT – welding-grinding station

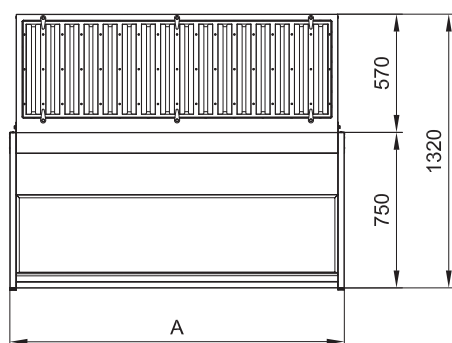


### Purpose

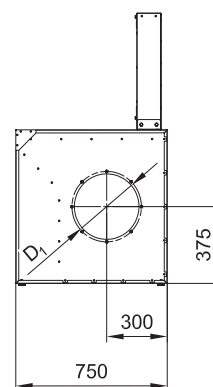
The SLOT welding-grinding station is designed for extraction the air polluted with dry dust, emitted mainly during the welding processes, but also in other operations as wood processing, grinding, metal trimming. Additionally, (after the grate is replaced) the station can be applied for dust extraction during manual cutting with a plasma burner (see ADDITIONAL EQUIPMENT). The contamination is being captured directly close at the source of emission: downwards – through the suction chamber with a grate surface and in rear direction – through the vertical suction chamber. It is important to connect the station to an extraction fan, filtering unit or to the central collecting ductwork.

### Structure

The self-supporting structure consists of a chamber with a grate top. On the back chamber edge is located a chamber with a vertical suction wall. Each table is equipped with a connection (on both sides of the device), of a diameter adjusted to the volume flow efficiency. In the lower part of the device, there is a drawer to collect the accumulated dust.



Front view



Side view

### Technical data

Device type	Part no.	A [mm]	D <sub>1</sub> [mm]	Recommended volume flow [m <sup>3</sup> /h]	Load capacity [kg]	Weight [kg]
SLOT 1600	813S13	800	200	1600	500	57
SLOT 2000	813S14	1200	250	2000	500	75
SLOT 3000	813S15	1600	315	3000	500	94
SLOT 4000	813S16	2000	315	4000	500	113

\* Load capacity is given for the whole surface of the work grate.

### Additional equipment

#### Replaceable grate

Device type	Part no.	Remarks
	R-1600	Due to the replaceable grate, it is possible to apply the station for extraction the impurities arising during the cutting with a manual plasma burner. The grate is to be installed in a place of the standard grate.
	R-2000	
	R-3000	
	R-4000	