

WPA-D-N/Ex – roof fan with horizontal outlet



 II 2 G c Ex e II T3

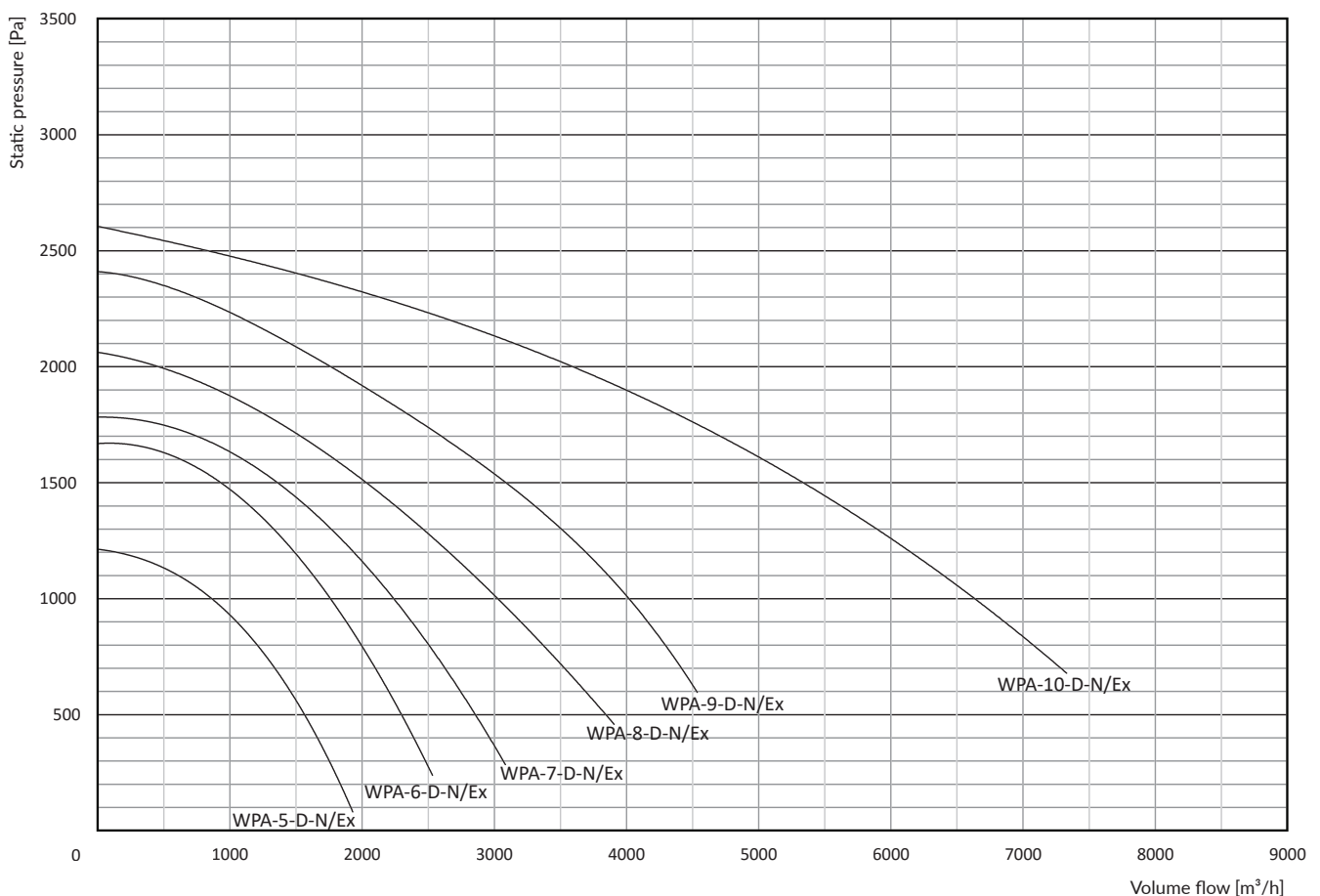
Purpose

In general, WPA-D-N/Ex fans have been designed for application in the areas of explosion risk, where explosive atmosphere (i.e. mixture of flammable compounds in the form of gas and vapour with the air) is likely to occur. Increased fan pressure make them particularly efficient within installations of local exhausts, filtering units and also within a system of significant flow resistances. The fan can be applied in a system with an air discharge of required dynamic uplift.

Structure

The fan consists of a spiral steel housing, Ex motor, aluminium radial impeller and a steel hood. The impeller is directly installed at the motor shaft (direct drive). Impeller blades cross-section reminds the profile of an aircraft wing, providing low acoustic pressure level. The fan inlet is equipped with a flange to install it on a roof base or on wall bracket. Typical feature of the fan is a silencer fastened at the fan outlet of its spiral housing, directed horizontally. For safety reason, the inlet and outlet are equipped with a protective grill.

It is recommended to install TK-type silencers at the fan inlet (for details see acoustic data in the table).

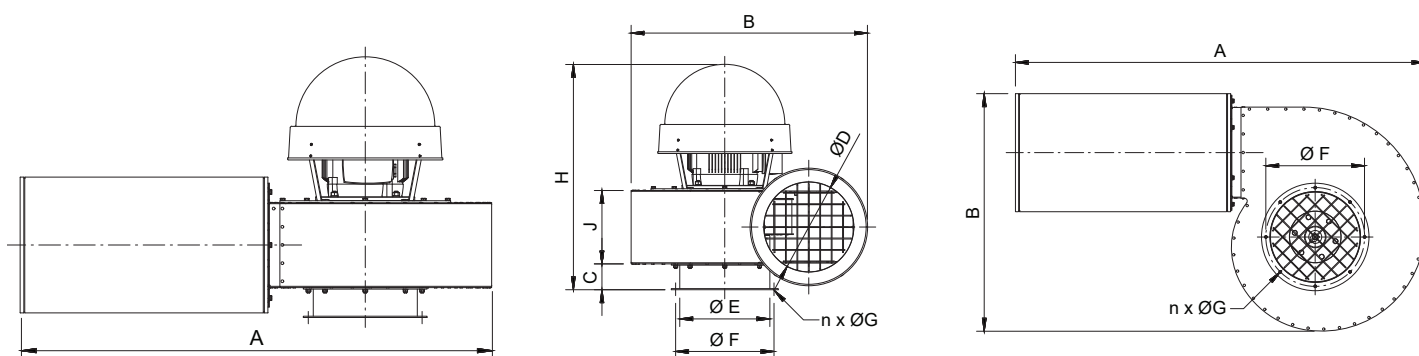


Technical data

Type	Part no.	Marking	Synchronous rotations [1/min]*	Supply voltage [V]	Motor rate [kW]	Ingress protection IP	Acoustic pressure level [dB(A)] from a distance of:		Maximum volume flow [m ³ /h]	Maximum vacuum [Pa]	Weight [kg]
							1 m	5 m			
WPA-5-D-N/Ex	888W09	II 2 G c Ex e II T3	3000	3x400	0,55	54	73/67**	59/53**	1900	1250	25
WPA-6-D-N/Ex	888W10	II 2 G c Ex e II T3	3000	3x400	0,75	54	78/75**	64/61**	2500	1700	26
WPA-7-D-N/Ex	888W11	II 2 G c Ex e II T3	3000	3x400	1,1	54	81/74**	67/60**	3100	1800	31
WPA-8-D-N/Ex	888W12	II 2 G c Ex e II T3	3000	3x400	1,5	54	82/78**	68/64**	3900	2050	38
WPA-9-D-N/Ex	888W13	II 2 G c Ex e II T3	3000	3x400	2,2	54	86/82**	72/68**	4500	2400	42
WPA-10-D-N/Ex	888W14	II 2 G c Ex e II T3	3000	3x400	4,0	54	87/81**	73/67**	7400	2600	74

* The fan motors are not adapted for application with a rotational speed governor.

** Measurements have been carried out with the additional TK L = 500 mm silencer installed at the fan inlet.



Bottom view of the fan

Dimensions

Type	A [mm]	B [mm]	C [mm]	D [mm]	ØE [mm]	ØF [mm]	n [pc.]	ØG [mm]	H [mm]	J [mm]
WPA-5-D-N/Ex	905	525	60	160	160	194	6	6,5	500	140
WPA-6-D-N/Ex	915	550	60	200	160	194	6	6,5	535	155
WPA-7-D-N/Ex	965	570	60	200	160	194	6	6,5	535	155
WPA-8-D-N/Ex	990	600	60	200	200	224 234 246	8 6 8	9,0 6,5 9,0	535	155
WPA-9-D-N/Ex	1030	665	60	200	200	224 234 246	8 6 8	9,0 6,5 9,0	605	155
WPA-10-D-N/Ex	1050	675	100	250	250	275	8	9,0	720	232