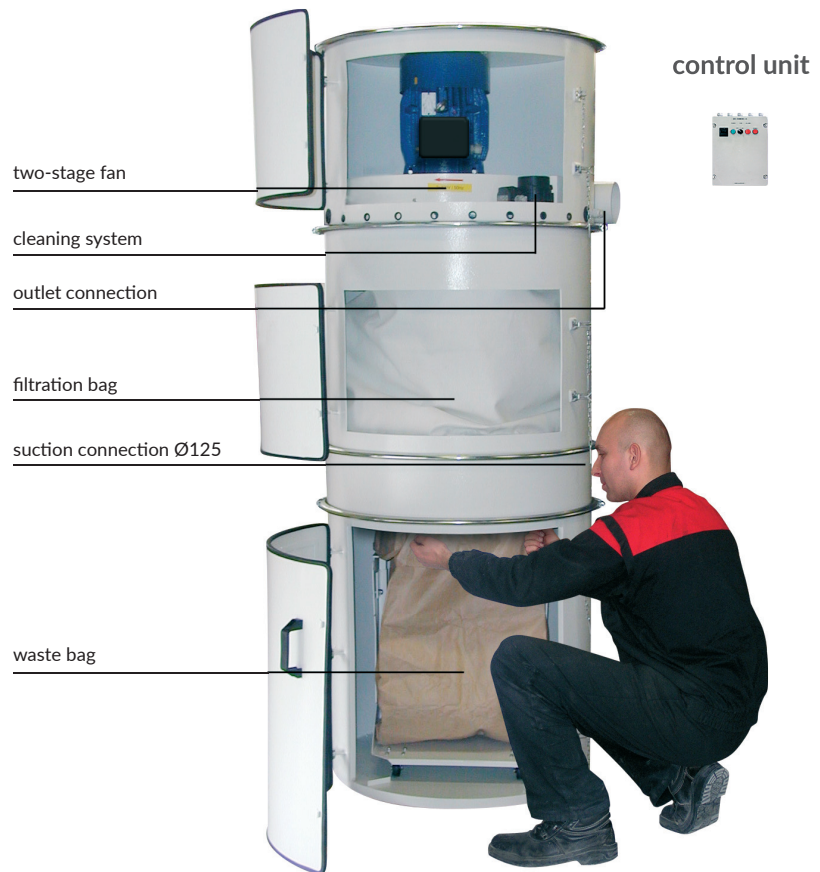


WE-5,5/D – wood dust capturing from wood processing machines



Purpose

WE-5,5/D dust separator is designed for wood dust extraction from wood processing machines as well as for removal the impurities arising during grinding the non-sparking materials, iron cast processing, powder painting, packing/repacking the powdery materials etc.

Structure

The dust separator consists of a cylindrical housing made of 4 segments, connected together with girdle clamps. In the upper part of the housing is located a fan. Under the fan there is a

fabric filtration bag, where the polluted air is supplied. The separated impurities are falling into the lower waste collecting bag. The lightweight dust fractions are depositing on the internal surface of the filtration bag, where they are cyclically shaken into the paper bag by the vibration mechanism. The suction fitting piece (of the separator) ought to be connected through polyurethane hoses with the processing machine where the dust is captured. The device is controlled by an electrical unit (fan ON/OFF).

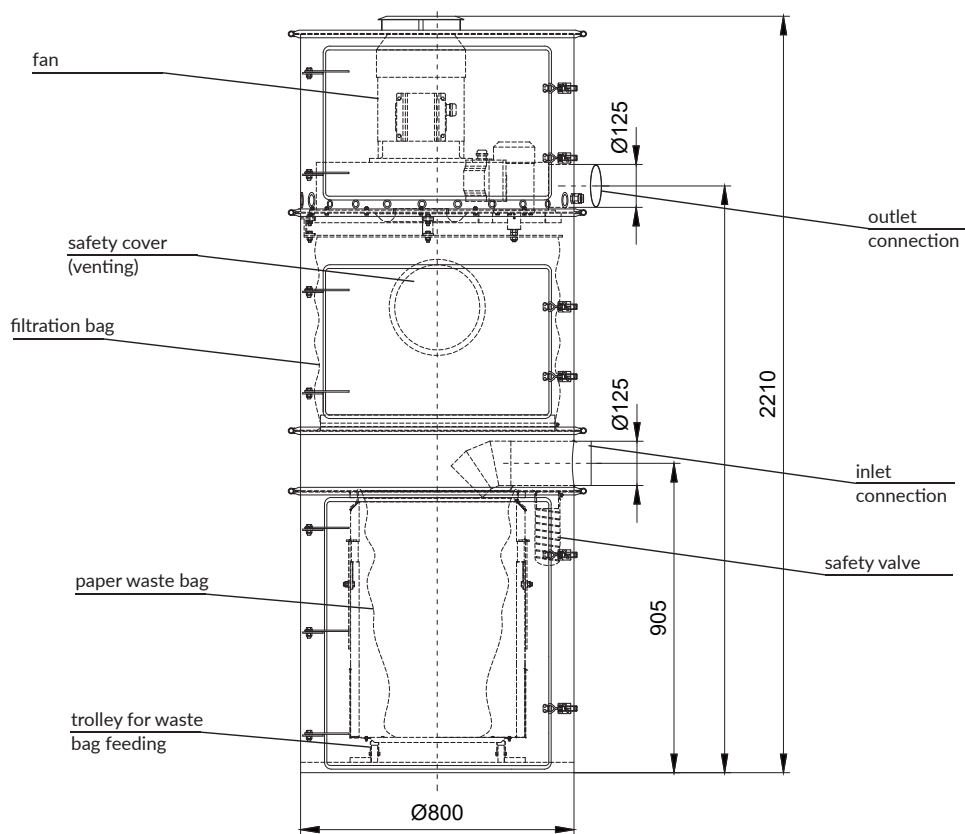
The function of the vibrator motor starts automatically, right at the moment of the fan switch-off. Additionally, the device is equipped with a fill-up state sensor of the waste bag. When the waste bag is filled up, it has to be drawn out on a trolley.

Technical data

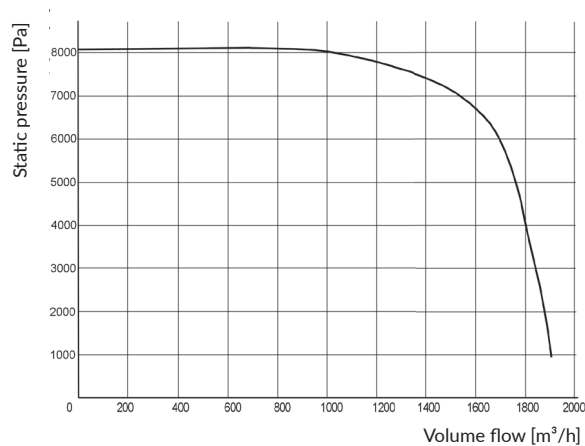
Type	Part no.	Supply voltage [V]	Motor rate [kW]	Ingress protection IP	Maximum volume flow [m³/h]	Maximum vacuum [Pa]	Weight [kg]	Inlet diameter [mm]	Outlet diameter [mm]	Acoustic pressure level [dB(A)] from a distance of:		Filtration efficiency [%]
										1 m	5 m	
WE-5,5/D	800O96	3x400	5,5	55	1890	8000	~212	125	125	88,7 (75,5)*	84,7 (68,7)*	98

*The noise level measurement was taken with attached silencer at the outlet.


WE-5,5/D




Flow charts



Filtration bag

	Type	Part no.
	WF-WE	876W30

Waste collecting bag

	Type	Part no.
	WZ-WE	876W31