

SEP-UFO-A – inertial separators



Purpose

SEP-UFO-A separators are used as pre-filters, for capturing the dry and coarse dust particles, arising during various technological processes. Additionally, separators are appropriate for other purposes:

- spark neutralisation – during some processes, e.g. welding and metal grinding,
- capturing various sorts of harmful waste materials, e.g. non-extinguished particles, glowing cigarettebutts, that would enter the discharge ducting, and subsequently into the final filter, during the use of a careless operator.

Due to their above mentioned features, separators protect the final filters from excessive dustiness overload and from the possible fire risk.

SEP-UFO-A separators can work with any chosen final filters of approximately similar volume flow, especially with the UFO-A filtering units – as they are dimensionally adapted.

Separators are not equipped with a fan. The air flow is created by the fan of the final filtering unit.

Structure

Separators are constructed of a rectangular housing with partition walls inside, dividing the separator in an inflow chamber for the dust laden air and the outlet chamber for the cleaned air. The inflow fitting piece is placed in the upper cover, whereas the outlet connections are in the side wall. The installation height of the outlet ferrules matches the suitable ferrules in the UFO-A filtering units.

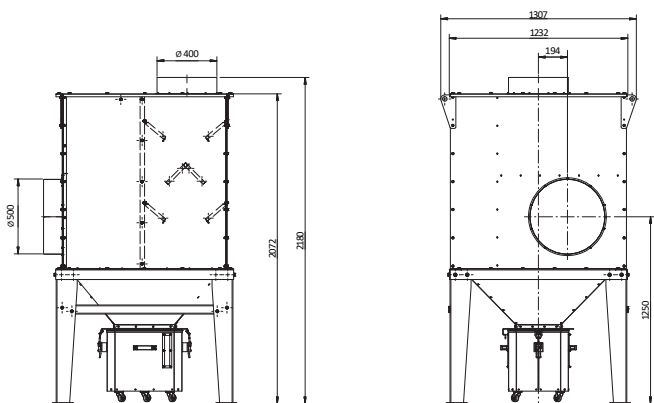
Dust separation proceeds in an inertial way. The extracted particles accumulate in a waste container that has to be emptied periodically.

Technical data

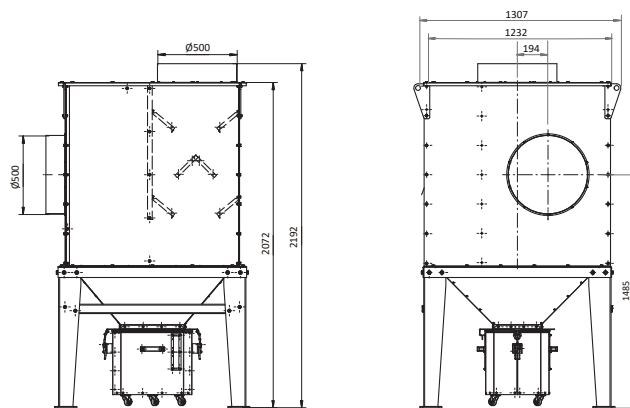
Type	Part No	Recommended volume flow [m ³ /h]	Flow resistances [Pa]	Weight [kg]	Capacity of the waste container [dm ³]
SEP-UFO-A-5000	800S23	5 000	200	257	72
SEP-UFO-A-10000	800S24	10 000	200	253	72
SEP-UFO-A-15000	800S25	15 000	200	375	72
SEP-UFO-A-20000	800S26	20 000	200	374	72

SEP-UFO-A

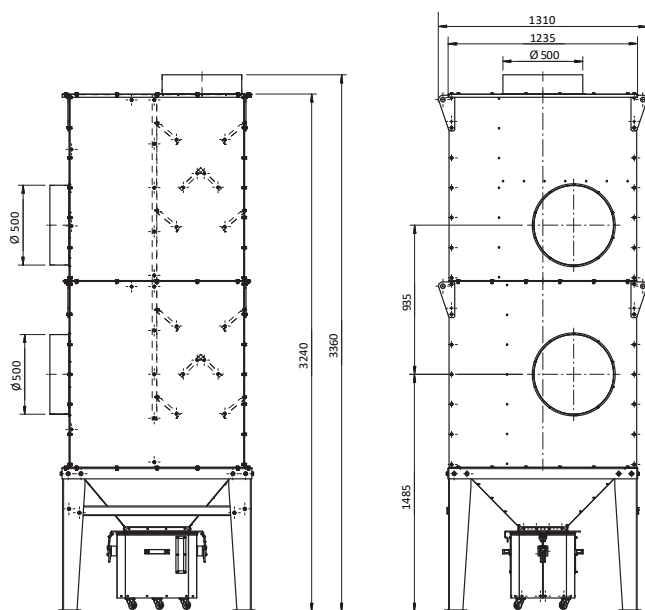
SEP-UFO-A-5000



SEP-UFO-A-10000



SEP-UFO-A-15000



SEP-UFO-A-20000

