

## OBS/P – stationary extractor with balancer



### Purpose

Stationary balancing exhaust extractors OBS/P are designed for effective removal of exhaust fumes, emitted by the vehicles exhaust pipes, during the engine tests, adjustment and diagnostics. They are applied in depots, garages, car service stations and workshops. OBS/P can be mounted on a wall or a column. It can work with an extraction fan installed on a wall bracket or on a roof base. Moreover, the extractor can be connected to a main collecting discharge ductwork. Due to the built-in shut-off damper, it is possible to apply a smaller extraction fan, in application where only part of the connected (to the collecting duct) extractors is simultaneously used.

### Structure

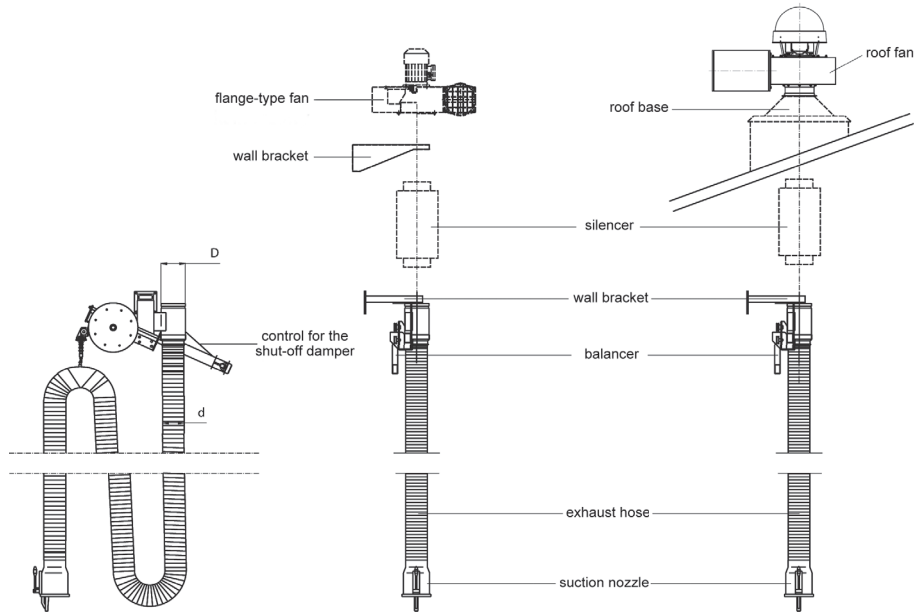
The extractor consists of a balancer, ratchet device, wall bracket (or ceiling hanger), tubular housing with a shut-off damper and a connection fitting piece, as well as an exhaust hose with nozzle. The balancer allows the hose to be pulled down manually, using small force only, whereas the ratchet device stops the hose lifting – giving the convenient nozzle position. After the manual nozzle disconnection, the balancer lifts the nozzle to the home position

and simultaneously closes the shut-off damper. OBS/P along with the hose of diameter Ø100 mm is adapted for cars, with hose of diameter Ø125 mm is for medium-size vehicles (of admissible total weight up to 3,5t), whereas Ø150 mm for trucks. Selection of the hose diameter is conditioned on the engine cubic capacity of the serviced vehicle and its rotational speed. In order to select the appropriate configuration contact with KLIMAWENT S.A.

#### NOTE:

For standard applications, we recommend extractors equipped with hoses of thermal resistance 150°C (short duration 200°C). For application with Diesel engine vehicles, equipped with Diesel Particulate Filter – Euro 5, Euro 6 (as there high exhaust temperature can occur), we recommend extractors with hoses of increased thermal resistance (OBS/P/CF).

## Example of application with the fans



NOTE: Elements drawn in broken line are not belonging to the extractor set.  
On demand we deliver ventilation accessories (roof base, silencer etc.).

## Technical data

Type <sup>1</sup>	Part no.	Diameter of the hose (d) [mm]	Length of the hose [m]	Thermal resistance [°C]	Recommended volume flow [m <sup>3</sup> /h]	Flow resistance [Pa]	Diameter of the connection (D) [mm]	Weight [kg]	Application <sup>4</sup>	Fans to work with
OBS/P-100-6	805O26	100	6	150 <sup>2</sup>	400	800	160	21,9	SO	WPA-5-E-N, WPA-5-D-N
OBS/P-100-6/CF	805O16	100	6	300/150 <sup>3</sup>	400	800	160	21,9	SO	
OBS/P-125-6	805O27	125	6	150 <sup>2</sup>	700	1000	160	22,9	SD	WPA-5-E-N, WPA-5-D-N
OBS/P-125-6/CF	805O17	125	6	300/150 <sup>3</sup>	700	1000	160	22,9	SD	
OBS/P-150-6	805O28	150	6	150 <sup>2</sup>	1500	1200	160	24,3	SC	WPA-7-E-N, WPA-7-D-N
OBS/P-150-6/CF	805O18	150	6	300/150 <sup>3</sup>	1500	1200	160	24,3	SC	
OBS/P-125-9	805O29	125	9	150 <sup>2</sup>	700	1200	160	32,1	SD	WPA-6-E-N, WPA-6-D-N
OBS/P-125-9/CF	805O19	125	9	300/150 <sup>3</sup>	700	1200	160	32,1	SD	
OBS/P-150-9	805O30	150	9	150 <sup>2</sup>	1500	1500	160	34,3	SC	WPA-8-E-N, WPA-8-D-N
OBS/P-150-9/CF	805O20	150	9	300/150 <sup>3</sup>	1500	1500	160	34,3	SC	

1. Prior to selection of the appropriate extractor size, please contact KLIMAWENT S.A.
2. Hose of thermal resistance 150°C (short duration 200°C).
3. First hose section of length 2 m of thermal resistance 300°C (short duration 350°C), further hose section of thermal resistance 150°C (short duration 200°C).
4. SO - car, SD - medium-size vehicle, SC - truck.

### Wall hanger

	Type	Part no.
	WB-OBS	817W21

### Ceiling hanger

	Type	Part no.
	CB-OBS	817W22

### Nozzles

Nozzles and suction stands – for application with the exhaust extractor – are described on separate catalogue card and they are additional equipment.