

KOS-L-ALAN-N – rail extraction systems with reel exhaust extractor




Purpose

The rail extraction system KOS-L-ALAN-N is designed for exhaust fume removal by means of a spring driven Reel Exhaust Extractor OP-ALAN-U/C-N, displacing along the KOS-L suction duct. Due to the trolley, underneath which the reel extractor is suspended – it is possible to position the exhaust extractor within the area of the exhaust pipe of the serviced vehicle.

Structure


The system consists of a standard self-tightening suction duct KOS-L and the Reel Exhaust Extractor OP-ALAN-U/C-N. It is possible to place several OP-ALAN-U/C-N Reel Exhaust Extractors on one suction duct. The system can be installed through hangers or supporting columns.

Self-tightening suction duct

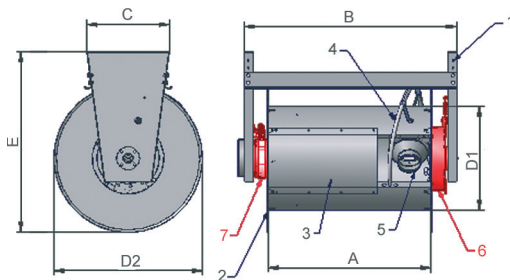
	Type	Part no.	Segment length [m]	Transverse dimensions [mm]	Cross-section [cm ²]	Unit weight [kg/m]	Segment weight [kg]
	KOS-L		804K45	1,25	160x240	384	14,2
		804K46	2,5	160x240	384	14,2	35,5

Accessories for the KOS-L suction duct are on separate catalogue card KOS-L, OBP/P.

Mobile reel extractor

	Type ¹	Equipped with a shut-off damper	Part no.	Maximum torque [Nm]	Hose	Weight ² [kg]
	OP-ALAN-U/C-8-N	no	805O76	50	Each reel is adapted to be equipped with a hose of diameter Ø100, Ø125 or Ø150 mm and of lengths 8 or 12 m. For selection of the hose set see: catalogue card ALAN-N.	61,7
	OP-ALAN/P-U/C-8-N	yes	805O78	50		61,7
	OP-ALAN-U/C-12-N	no	805O77	50		63,7
	OP-ALAN/P-U/C-12-N	yes	805O79	50		63,7

1. Before the selection of the appropriate type of extractor, please contact KLIMAWENT S.A.
2. The quoted values do not include the weight of the hose.



Dimension	Spring drive	
	U/C-8-N	U/C-12-N
A	775	1000
B	1000	1225
C	355	355
D1	450	450
D2	645	645
E	780	780

1. Framework
2. Hose reel
3. Reel cover
4. Spiral
5. Connection
6. Spring mechanism
7. Brake

Fans

Fans should be selected from separate catalogue cards, according to the flow efficiency and flow resistances.

Nozzles

Nozzles and suction stands – for application with the exhaust extractor – are described on separate catalogue card and they are additional equipment.