

## ERGO-FLEX LUX – extraction arms



### Purpose

ERGO-FLEX LUX extraction arms are designed for extraction of dust and welding fumes, as well as other fine dust particles, directly at the emission source. Thus they do not allow to expand the contamination within the room and to be inhaled by people. The arms are manufactured in hanging and standing version. The appliance can operate independently, with its own extraction fan, or in a group of stationary extractors connected to the main ducting with a central fan.

### Structure

ERGO-FLEX LUX extraction arm consists of following assemblies:

- swivel,
- hood,
- hose – sleeved onto the joint construction of aluminium profiles,
- tension spring – to equilibrate the weight of the extraction arm.

To mount the extraction arm on a wall or a column, apply a wall bracket. Simultaneously, to the wall bracket can be fastened an appropriate fan or a connection fitting piece.

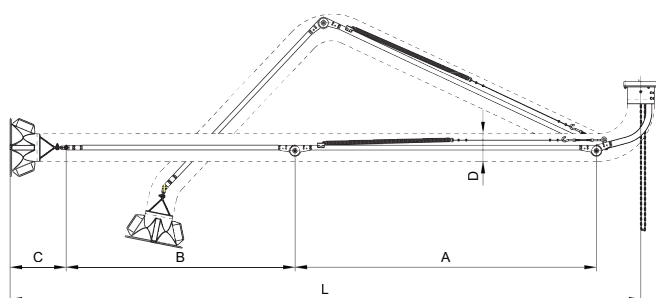
Correctly adjusted frictional joints, along with the spring, provide the comfort of arm manoeuvring and easy position setting. The hood is equipped with self-braking joints, providing easy positioning within two operational planes. At the hood inlet is located a protective mesh, to prevent the glowing particles from entering the extraction arm.

It is possible to equip the arm swivel with a tight shut-off damper in the swivel, as additional equipment.

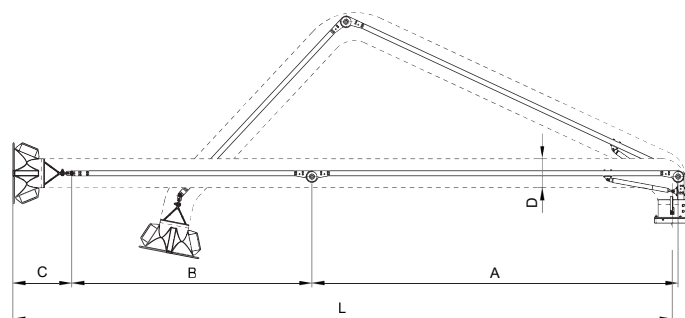
In case of an extended extraction system (consisting of many arms), by closing the shut-off dampers in the not being in operation arms, it is possible to increase significantly the flow efficiencies in the other extraction arms.

ERGO-FLEX LUX is produced in a version of 160 mm nominal diameter, whereby the recommended volume flow is: 1000 m<sup>3</sup>/h.

Hanging version



Standing version

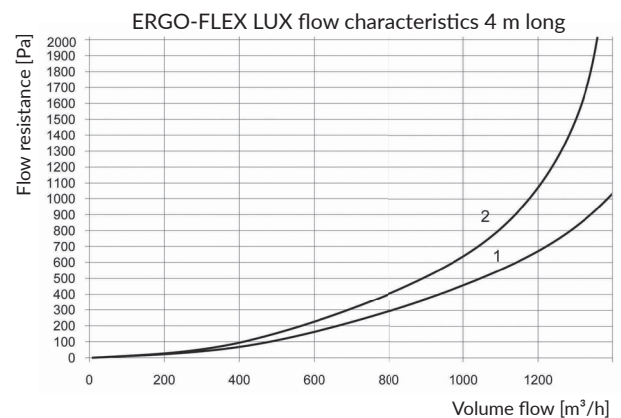
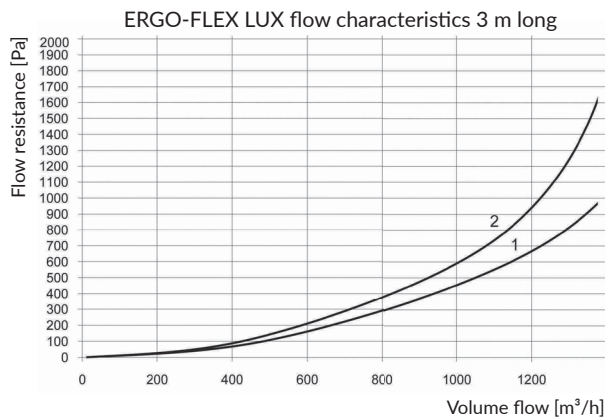
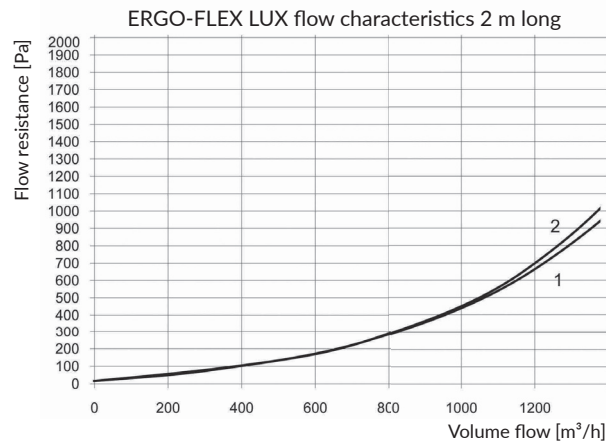


### Technical data

Type	Part. no	Dimensions					Weight [kg]
		A [mm]	B [mm]	C [mm]	L [m]	Dn [mm]	
ERGO-FLEX LUX-2	810R42	930	435	355	2,0	160	8,5
ERGO-FLEX LUX-3	810R43	1510	846	355	3,0	160	9,6
ERGO-FLEX LUX-4	810R44	1890	1435	355	4,0	160	10,2
ERGO-FLEX LUX-2-R	810R45	1230	435	355	2,0	160	8,4
ERGO-FLEX LUX-3-R	810R46	1810	846	355	3,0	160	9,1
ERGO-FLEX LUX-4-R	810R47	2190	1435	355	4,0	160	9,8

# ERGO-FLEX LUX

1. Straightened arm
2. Bend arm



## Suction hood

Suction hood type	Material	Type	Part. no	ØG [mm]	ØZ [mm]	ØT [mm]	H [mm]	Weight [kg]	Application	Equipment
	plastic ABS	LST	810H49	295	365	170	190	0,42	ERGO-FLEX LUX-2 ERGO-FLEX LUX-3 ERGO-FLEX LUX-4 ERGO-FLEX LUX-2-R ERGO-FLEX LUX-3-R ERGO-FLEX LUX-4-R	- replaceable inlet mesh

## Inlet mesh for the ERGO hoods

	Type	Part. no	Weight [kg]
	LST	834Z33	0,10

## Wall brackets

Sort of the bracket	Material	Type	Part. no	S [mm]	Weight [kg]	Suitable extraction arms
	Steel plate	WBN-160-L	817W53	320	4,6	ERGO-FLEX LUX

## Additional equipment

### Shut-off damper

	Type	Part. no	Remarks	Suitable extraction arms
	PO-ERGO LUX-L	829P14	A tight damper to cut off entirely the air flow in the extraction arm. The damper is located in the swivel.	ERGO-FLEX LUX